

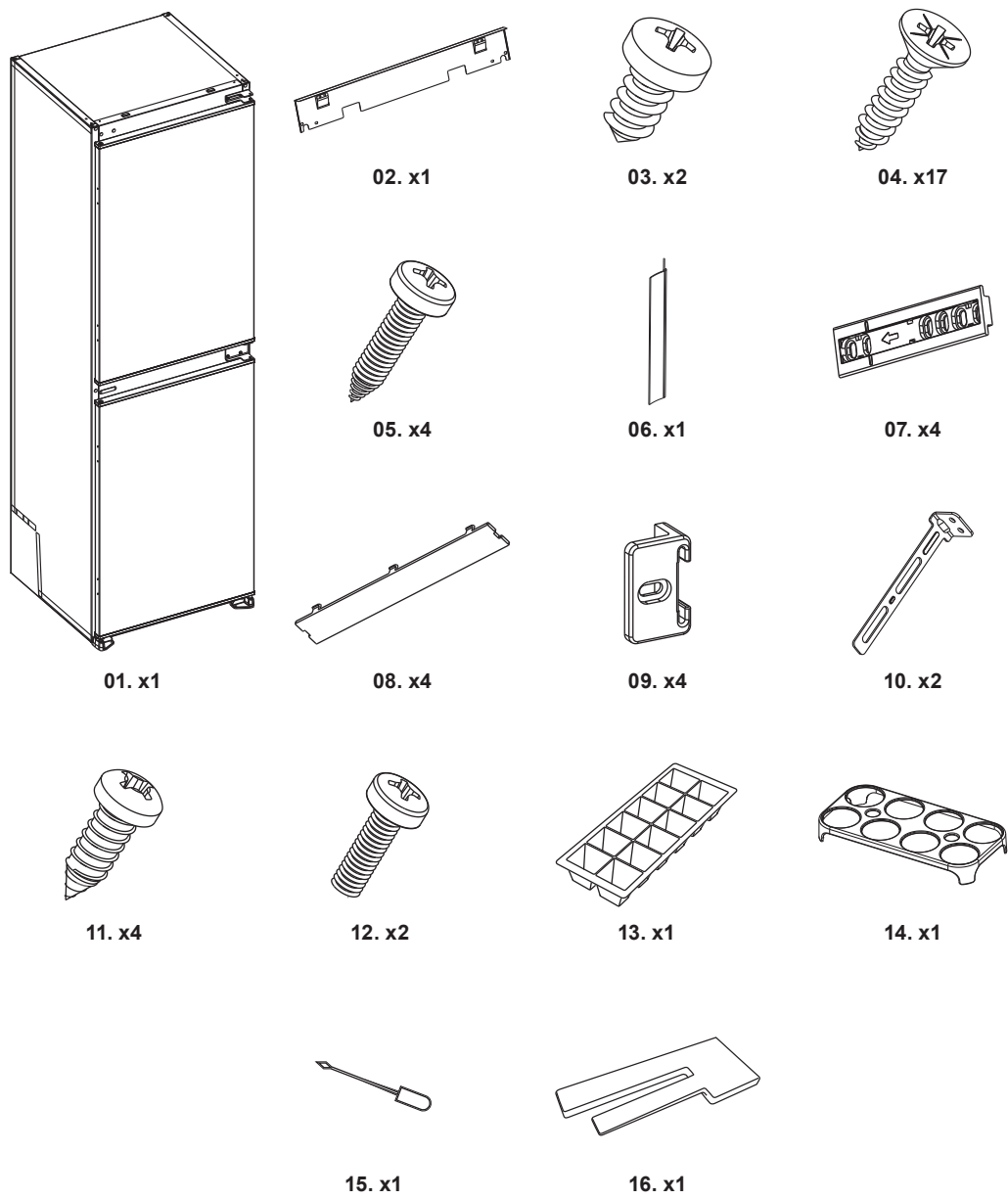
EN Built-in Fridge Freezer 5050

EN IMPORTANT - These instructions are for your safety. Please read through them thoroughly prior to handling the product and retain them for future reference.

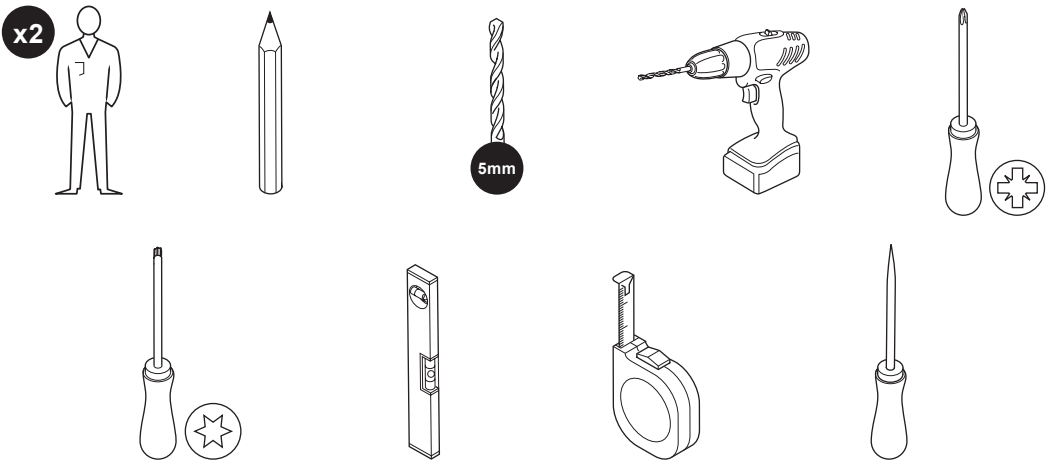
V11023_5059340794198_MAND1_2223

GHB15050UK
5059340794198
CLB15050UK
5059340820057

EN Parts



EN You will need



EN Contents

EN	
Product description	5
Safety	6
Guarantee	10
Installation	11
Functions & Settings	38
Care & maintenance	40

EN Not included



AA. x1



BB. x1



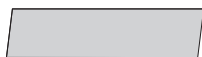
CC. x2



DD. x2



EE. x1



FF. x1



GG. x2



HH. x2



II. x1



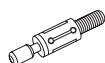
JJ. x16



KK. x12



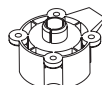
LL. x16



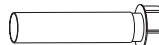
MM. x4



NN. x76



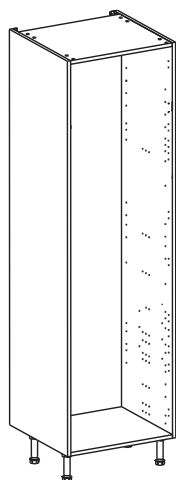
PP. x4



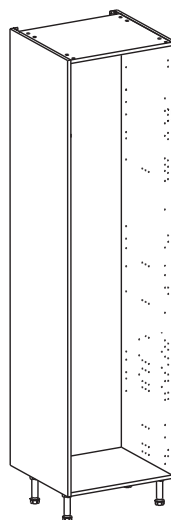
QQ. x4



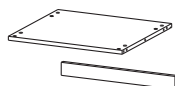
RR. x2



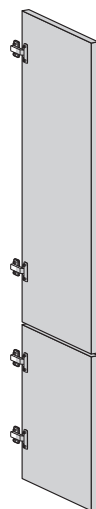
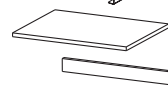
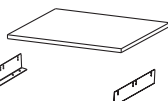
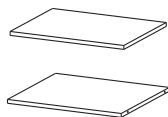
EN Standard Larder



EN Tall Larder

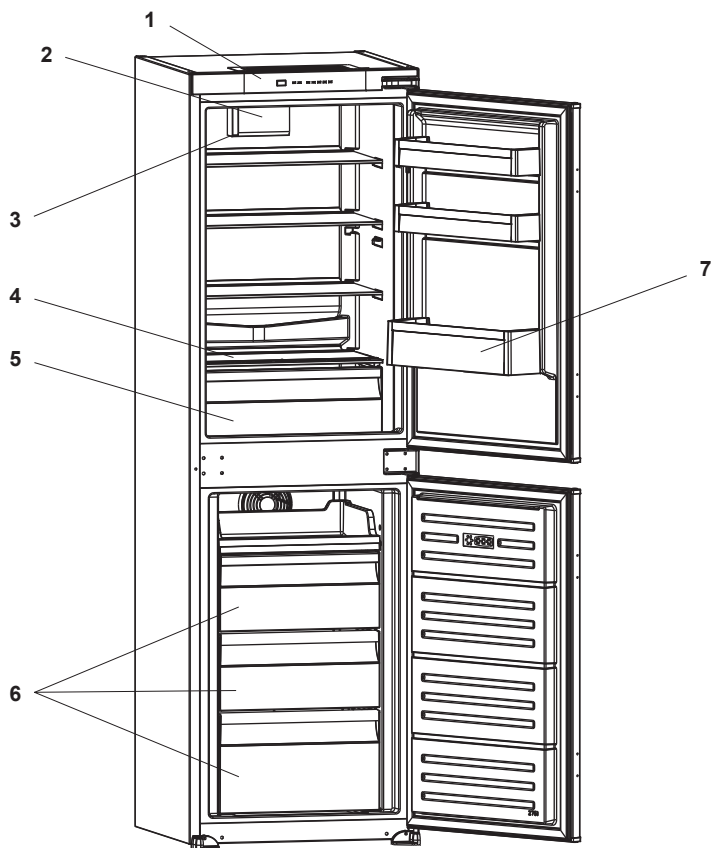


EN Appliance Shelf Pack



EN Decorative Doors

EN Product description



- EN** 1. Thermostat control 2. LED lamp 3. Cooling fan 4. Glass shelves 5. Vegetable basket
6. Freezer drawers 7. Door balconies



EN

Before you start

- These instructions are for your safety. Please read the following instructions and the sections of “Installation, Care and maintenance” carefully before proceeding with the installation and use of this appliance. Keep the instruction manuals for future reference.



CAUTION: DO NOT OVERLOAD THE SHELVES AND FOLLOW THE MAXIMUM LOADING CAPACITY.

- To avoid the risks that are always present when you use an electrical appliance it is important that this product is installed correctly and that you read the safety instructions carefully to avoid misuse and hazards. After unpacking the product please check that it is not damaged. If in doubt, do not use the appliance but contact Customer Services on 0800 324 7818 (UK) and 1800 932 230 (Eire).

- Check the package and make sure you have all of the parts listed and decide upon the appropriate location for your product.
- The specification plate shown on this appliance displays all the necessary identification information for ordering replacement parts and further information can be found at the end of this manual.
- If you sell the appliance, give it away, or leave it behind when you move house, please ensure that you pass on this manual so that the new owner can become familiar with the appliance and its safety warnings.



WARNING: KEEP VENTILATION OPENINGS, IN THE APPLIANCE ENCLOSURE OR IN THE BUILT-IN STRUCTURE, CLEAR OF OBSTRUCTION.



WARNING: DO NOT USE MECHANICAL DEVICES OR OTHER MEANS TO ACCELERATE THE DEFROSTING PROCESS, OTHER THAN THOSE RECOMMENDED BY THE MANUFACTURER.



WARNING: DO NOT DAMAGE THE REFRIGERANT CIRCUIT.



WARNING: DO NOT USE ELECTRICAL APPLIANCES INSIDE THE FOOD STORAGE COMPARTMENTS OF THE APPLIANCE, UNLESS THEY ARE OF THE TYPE RECOMMENDED BY THE MANUFACTURER.

- Do not store explosive substances such as aerosol cans with a flammable propellant in this appliance.



WARNING: WHEN POSITIONING THE APPLIANCE, ENSURE THE SUPPLY CORD IS NOT TRAPPED OR DAMAGED.



WARNING: DO NOT LOCATE MULTIPLE PORTABLE SOCKET-OUTLETS OR PORTABLE POWER SUPPLIES AT THE REAR OF THE APPLIANCE.

- This appliance can be used by children aged from 8 years and above and persons with reduced physical, sensory or mental capabilities or lack of experience and knowledge if they have been given supervision or instruction concerning use of the appliance in a safe way and understand the hazards involved. Children shall not play with the appliance. Cleaning and user maintenance shall not be made by children without supervision.
- This appliance is for domestic household use only.



WARNING: DO NOT BLOCK ANY VENTILATION GRILLS AND ENSURE THERE IS SUFFICIENT AIRFLOW AT THE REAR OF THE APPLIANCE.

- Before cleaning always unplug the appliance from the mains supply.
- A steam cleaner should never be used to clean the appliance.
- If the supply cord is damaged, it must be replaced by the manufacturer, its service agent or similarly qualified persons in order to avoid a hazard.
- Repairs should only be made by an authorized service engineer using genuine replacement spares. Repairs by non-authorized engineers could invalidate your guarantee. Contact the Customer Service helpline at the end of this manual for assistance.
- Connection to the mains supply should not be made with an extension cord.
- Do not allow children to play inside or with the door of this appliance to avoid possible toppling over of the appliance and injury.
- Do not allow children access to the front grill or rear compressor department of this appliance to avoid possible injury.
- Do not attempt to repair this appliance yourself, there are no user serviceable parts inside. In the event of a malfunction, contact the Customer Service helpline at the end of this manual.
- Dispose of all packaging materials safely and responsibly.
- Care should be taken when handling or transporting the product to prevent damaging the refrigerating circuit or components.



WARNING: THIS PRODUCT USES ISOBUTANE R600A REFRIGERANT, WHICH CAN BE FLAMMABLE OR EXPLOSIVE. REPAIRS AND DISPOSAL MUST ALWAYS BE CARRIED OUT BY A R600A QUALIFIED ENGINEER.

- Care should be taken when handling or transporting the product to prevent damaging the refrigerating circuit or components.
- This product should be placed at least 10 cm from stoves, ovens and other heating appliances.
- Do not place the product on a carpeted surface as this will prevent adequate ventilation.
- This appliance must be installed in a larger cabinet.
- Choose a dry and well ventilated space for installation.

- To avoid contamination of food, please respect the following instructions:
 - Opening the door for long periods can cause a significant increase of the temperature in the compartments of the appliance.
 - Clean regularly surfaces that can come in contact with food and accessible drainage systems.
 - Store raw meat and fish in suitable containers in the refrigerator, so that it is not in contact with or drip onto other food.
 - If the refrigerating appliance is left empty for long periods, switch off, defrost, clean, dry, and leave the door open to prevent mould developing within the appliance.



**WARNING:
RISK OF FIRE /
FLAMMABLE
MATERIALS**



WARNING: THE BULB SHALL BE REPLACED BY QUALIFIED TECHNICIAN, CONTACT THE CUSTOMER SERVICE HELPLINE FOR ASSISTANCE.

Guarantee

We take special care to select high quality materials and use manufacturing techniques that allow us to create products incorporating design and durability. This refrigerator has a manufacturer's guarantee of 2 years against manufacturing defects, from the date of purchase (if bought in store) or date of delivery (if bought online), at no additional cost for normal (non-professional or commercial) household use.

To make a claim under this guarantee, you must present your proof of purchase (such as a sales receipt, purchase invoice or other evidence admissible under applicable law), please keep your proof of purchase in a safe place. For this guarantee to apply, the product you purchased must be new, it will not apply to second hand or display products. Unless stated otherwise by applicable law, any replacement product issued under this guarantee will only be guaranteed until expiry of the original period guarantee period.

This guarantee covers product failures and malfunctions provided the product was used for the purpose for which it is intended and subject to installation, cleaning, care and maintenance in accordance with the information contained in these terms and conditions, in the user manual and standard practice, provided that standard practice does not conflict with the user manual.

This guarantee does not cover defects and damage caused by normal wear and tear or damage that could be the result of improper use, faulty installation or assembly, neglect, accident, misuse, or modification of the product. Unless stated otherwise by applicable law, this guarantee will not cover, in any case, ancillary costs (shipping, movement, costs of uninstalling and reinstalling, labour etc), or direct and indirect damage.

If the product is defective, we will, within a reasonable time, repair.

Rights under this guarantee are enforceable in the country in which you purchased this product. Guarantee related queries should be addressed to the store you purchased this product from.

The guarantee is in addition to and does not affect your statutory rights.

IMPORTANT - RETAIN THIS INFORMATION FOR FUTURE REFERENCE: READ CAREFULLY

Before you start

This appliance must be installed correctly by a qualified person, strictly following the manufacturer's instructions.



WARNING: DANGER OF ELECTRIC SHOCK! THE POWER SUPPLY MUST BE CUT OFF BEFORE THE APPLIANCE IS INSTALLED COMPLETELY.

- Only a qualified person in compliance with the instructions provided can install the appliance. The manufacturer declines all responsibility for improper installation, which may harm persons and animals and cause damage.
- Check the package and make sure you have all of the parts listed.
- Decide on the appropriate location for the appliance.
- This appliance contains glass. Please take care when fitting or handling to prevent personal injury or damage to the appliance.
- The specifications plate is available on this appliance. This plate displays all the necessary identification information for ordering replacement parts.
- If you sell the appliance, give it away, or leave it behind when you move house, please ensure you pass on this set of instructions.

Safety



WARNING: IN ORDER TO PREVENT OVERTURNING THIS APPLIANCE MUST BE INSTALLED IN AN APPLIANCE LARDER CABINET AND MUST BE USED WITH THE WALL BRACKETS SUPPLIED WITH THE CABINET.



WARNING: INSTALLATION MUST BE PERFORMED BY A COMPETENT PERSON ONLY. THIS PRODUCT COULD BE DANGEROUS, CAUSE INJURY OR DAMAGE TO PROPERTY IF INCORRECTLY INSTALLED.

- Some parts could be hazardous to small children.
- Keep all parts out of reach and do not leave children unattended in the assembly area.
- Serious or fatal crushing injuries can occur from furniture tip-over.

To prevent this furniture from tipping over it must be permanently fixed to the wall. Fixing devices for the wall are not included since different wall materials require different types of fixing devices. Use fixing devices suitable for the walls in your home.

- Prevent children from climbing or hanging on the drawers, doors or shelves.
- If you are in any doubt as to how to install this product, consult a technically competent person.



CAUTION: ALWAYS ENSURE THE PRODUCT IS SECURELY FITTED BEFORE USE.

IMPORTANT RETAIN THIS INFORMATION FOR FUTURE REFERENCE: READ CAREFULLY.

All parts and full details on how to assemble your appliance larder cabinet are supplied with the appliance shelf pack.

Assembly Procedure

- A) Confirm your larder height from either standard or tall.
- B) Decide on your appliance door opening direction and change it if required.
- C) Build the cabinet and attach the hinges and decorative doors. Secure the cabinet to the wall.
- D) Locate the appliance within the cabinet and secure the fridge to the cabinet.

Before connecting the mains supply ensure that the mains voltage corresponds to the voltage on the rating plate.

Direct Connection

- The appliance is supplied with a fitted plug suitable for use in your country.
- Do not bend the cable or compress it under a heavy load.
- Regularly check the power cord for damage. If the supply cord becomes damaged, it must be replaced by the manufacturer, its service agent or similarly qualified persons in order to avoid a hazard. Contact the Customer Service helpline at the end of this manual.



WARNING: THIS IS A CLASS I APPLIANCE AND MUST BE EARTHED.

Technical data

Power supply voltage	220-240 V
Frequency (Hz)	50
Refrigerant / weight	R-600 a Isobutane / 46 g
Rated current (A)	0.83 A
Power consumption (W)	163 W
Defrost power (W)	153 W

Supplier's name or trade mark: Kingfisher Int. Prod. Ltd., Kingfisher Int. Prod. B.V.			
Supplier's address ^(b):			
UK Manufacturer: Kingfisher International Products Limited, 1 Paddington Square, London, W2 1GG, United Kingdom			
EU Manufacturer: Kingfisher International Products B.V., Rapenburgerstraat 175E, 1011 VM Amsterdam, The Netherlands			
Model identifier: CLBI5050UK / GHBI5050UK			
Type of refrigerating appliances:			
Low-noise appliance:	No	Design type:	Built-in
Wine storage appliance:	No	Other refrigerating appliances:	Yes
General product parameters:			
Parameter		Value	Parameter
Overall dimensions (millimeter)	Height	1770	Total volume (L)
	Width	540	
	Depth	545	
EEI		100 %	Energy efficiency class
Airborne acoustical noise emissions (dB(A) re 1 pW)		41	Airborne acoustical noise emission class
Annual energy consumption (kWh/a)		232	Climate class:
Minimum ambient temperature (°C), for which the refrigerating appliance is suitable		16 °C	Maximum ambient temperature (°C), for which the refrigerating appliance is suitable
Winter setting		No	

Compartment Parameters:					
Compartment type		Compartment parameters and values			
		Com-partment Volume (dm³ or l)	Recommended temperature setting for optimised food storage (°C)	Freezing capacity (kg/24 h)	Defrosting type (auto-defrost = A, manual defrost = M)
			These settings shall not contradict the storage conditions set out in Annex IV, Table 3		
Pantry	No	—	—	—	—
Wine storage	No	—	—	—	—
Cellar	No	—	—	—	—
Fresh food	Yes	144.9	0 ≤ +4	—	A
Chill	No	—	—	—	—
0-star or ice-making	No	—	—	—	—
1-star	No	—	—	—	—
2-star	No	—	—	—	—
3-star	No	—	—	—	—
4-star	Yes	84.7	≤ -18	3.95	A
2-star section	No	—	—	—	—
Variable temperature compartment	No	—	—	—	—
For 4-star compartments					
Fast freeze facility			No		
For wine storage appliances					
Number of standard wine bottles			-		
Light source parameters:					
Type of light source			LED		
Energy efficiency class			F		
Minimum duration of the guarantee offered by the manufacturer (b):24					
Additional information:EN 60704-2-14/EN 60704-3					
Weblink to the manufacturer's website, where the information in point 4 (a) Annex of Commiss Regulation (EU) 2019/2019 (1) (b) is found:					
(a) As determined in accordance with Commission Delegated Regulation (EU) 2019/2015 (2).					
(b) Changes to these items shall not be considered relevant for the purposes of point 4 of Article 4 of Regulation (EU) 2017/1369.					
(c) If the product database automatically generates the definitive content of this cell the supplier shall not enter these data.					
(d) This item shall not be considered relevant for the purpose of Article 2(6) of Regulation (EU) 2017/1369.					

Technical parameters of the model and their declared values for refrigerating appliances			
A general description of the refrigerating model, sufficient for it to be unequivocally and easily identified:			
Product specifications:			
General product specifications:			
Parameter	Value	Parameter	Value
AE_Annual energy consumption (kWh/a)	232	EEl (%)	100 %
SAE_Standard annual energy consumption (kWh/a)	232.30	Combi parameter ©	1.49
Temperature rise time (h)	9.23	Load factor (L)	1.00
Door heat loss factor (D)	1.000	Climate class:	N/ST/T
Anti-condensation heater type	None	Airborne acoustical noise emissions (dB(A) re 1 pW)	41
Additional product specifications for refrigerating appliances, except for low noise refrigerating appliances:			
Parameter		Value	
Daily energy consumption at 32 °C (kWh/24h)		0.856	
Additional product specifications for low noise refrigerating appliances:			
Parameter		Value	
Daily energy consumption at 25 °C (kWh/24h)		-	
Additional product specifications for wine storage appliances:			
Parameter	Value	Parameter	Value
Internal humidity (%)	-	Number of bottles	-

Compartment specifications:								
Compartment type	Compartment parameters and values							
	Target temperature (°C)	Compartment volume (dm³ or l)	Freezing capacity (kg/24 h)	Thermo-dynamic parameter (rc)	Nc	Mc	Defrost factor (Ac)	Built-in factor (Bc)
Pantry	17	-	-					-
Wine storage	12	-	-					-
Cellar	12	-	-					-
Fresh food	4	144.9	-	1.00	75	0.12	1.00	1.02
Chill	2	-	-					-
0-star or ice making	0	-	-				-	-
1-star	-6	-	-				-	-
2-star	-12	-	-				-	-
3-star	-18	-	-				-	-
4-star	-18	84.7	3.95	2.10	138	0.15	1.10	1.05
2-star section	-12	-	-				-	-
Variable temperature compartment	-	-	-	-	-	-	-	-
The sum of the volumes of the chill compartment(s) and the unfrozen compartment(s) (l or dm³)		144.9						
The sum of the volumes of the frozen compartment(s) (l or dm³)		84.7						

NOTES:

1. This appliance is designed to be used within an ambient temperature range of 16 °C to 43 °C. (Climate Class: Normal N, Sub-Tropical ST, Tropical T).

According to EU regulation 2019/2016. Information can also be found at the website:
www.kingfisher.com/products

Troubleshooting

Problem	Solution
The fridge / freezer doesn't work.	Check the appliance is switched on.
	Check that there has not been a power cut.
	Check that the plug and mains outlet are working correctly.
	Check that the fuse has not blown.
	Check that the voltage is correct for the appliance.
The temperature inside the appliance is not cold enough.	Do not over fill the appliance.
	Adjust the thermostat.
	Check that the appliance is not placed in direct sunlight, or too near to a heating source.
	Check that the ambient temperature is within the operation limits of the appliance.
	Ensure the doors are kept open for the shortest time possible.
The temperature within the appliance is too cold.	Adjust the thermostat.
	Only use the coldest setting for rapid cooling to avoid using the compressor constantly.
The inner surfaces of the appliance are wet.	Condensation has formed, wipe dry and adjust the thermostat.
Presence of bad odours.	Dispose of out of date food or repackage into sealed containers.
	Clean the appliance regularly and remove any spillages immediately.
	Ensure the internal drainage hole is not blocked.
The doors do not close properly.	Ensure there are no items blocking the doors and all seals are correctly intact.
The appliance makes noises including the sound of flowing liquid.	This is perfectly normal and is the sound of the coolant flowing through the compressor. Ensure the appliance is level and that there is a small gap between the wall and the rear of the carcass.
Alarm indicator LED is turning on	Ensure that the door is closed and the product has been running for at least one hour. Please contact the service center if the error continues.

Recycling & disposal



Waste electrical products (WEEE) should not be disposed of with household waste. Please recycle where facilities exist. Check with your local governmental authority, domestic waste disposal services or the retailer where the product was bought for recycling advice. The wheeled bin symbol on the product or its packaging indicates that this product cannot be treated as normal household waste. This product must be handed over to an electric and electronic equipment collection point for recycling.

Safety Regulations



WARNING: THIS APPLIANCE IS DESIGNED FOR THE STORAGE OF FOOD AND BEVERAGES ONLY. DO NOT STORE ANY OTHER MATERIALS IN THIS APPLIANCE.

Availability of Spare Parts

Dependent upon the spare part, these are available for a minimum period of seven years for professional repairers or a minimum of ten years for professional repairers and end-users. Contact the Customer Service helpline for assistance or visit:

www.kingfisherspares.com

For assistance, contact the Customer Services helpline:

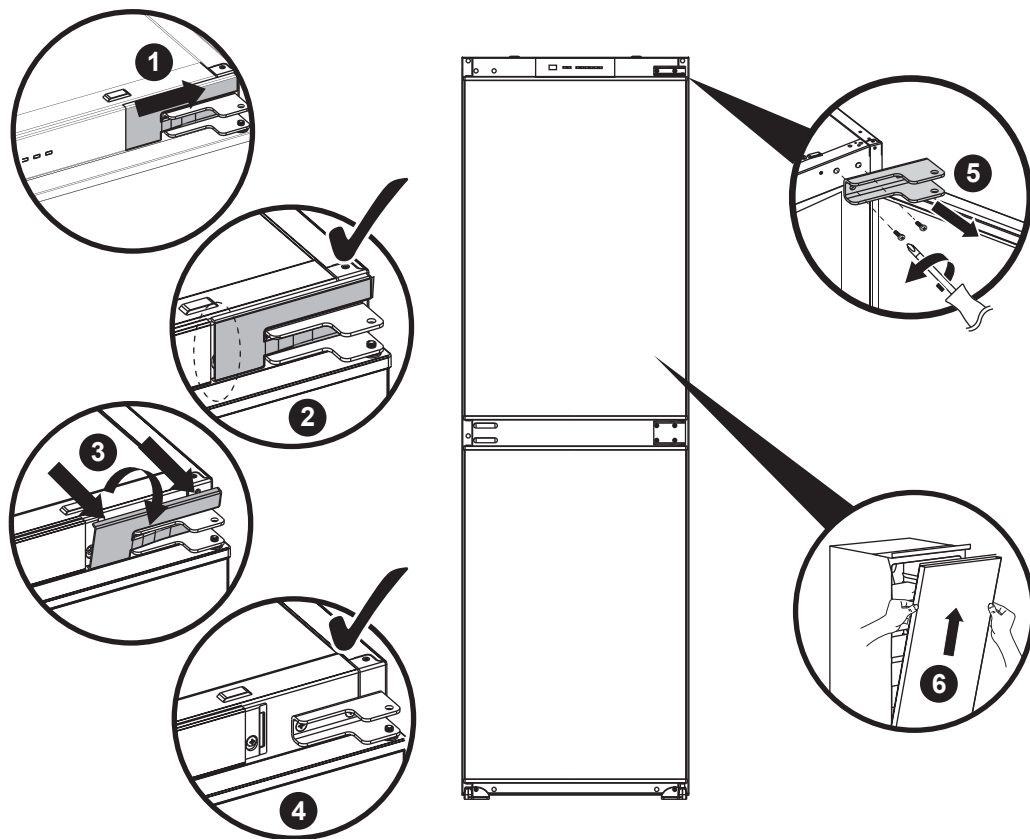
UK 0800 324 7818 uk@kingfisherservice.com

Eire 1800 932 230 eire@kingfisherservice.com

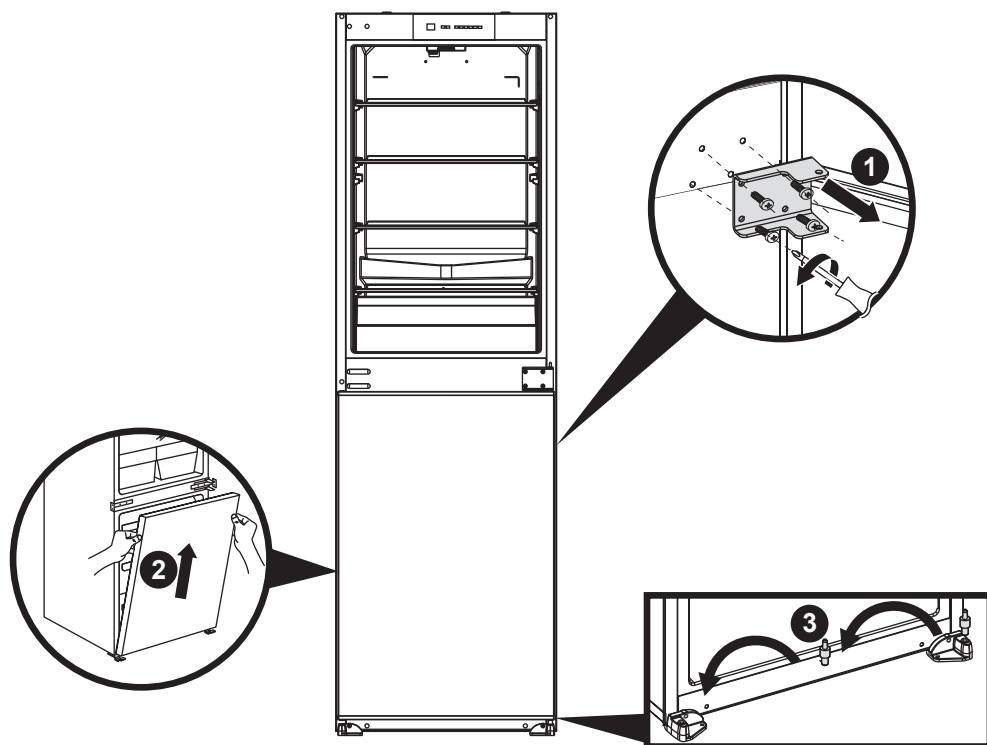
Further information about this appliance can also be found at:

www.kingfisher.com/products

Door Reversal

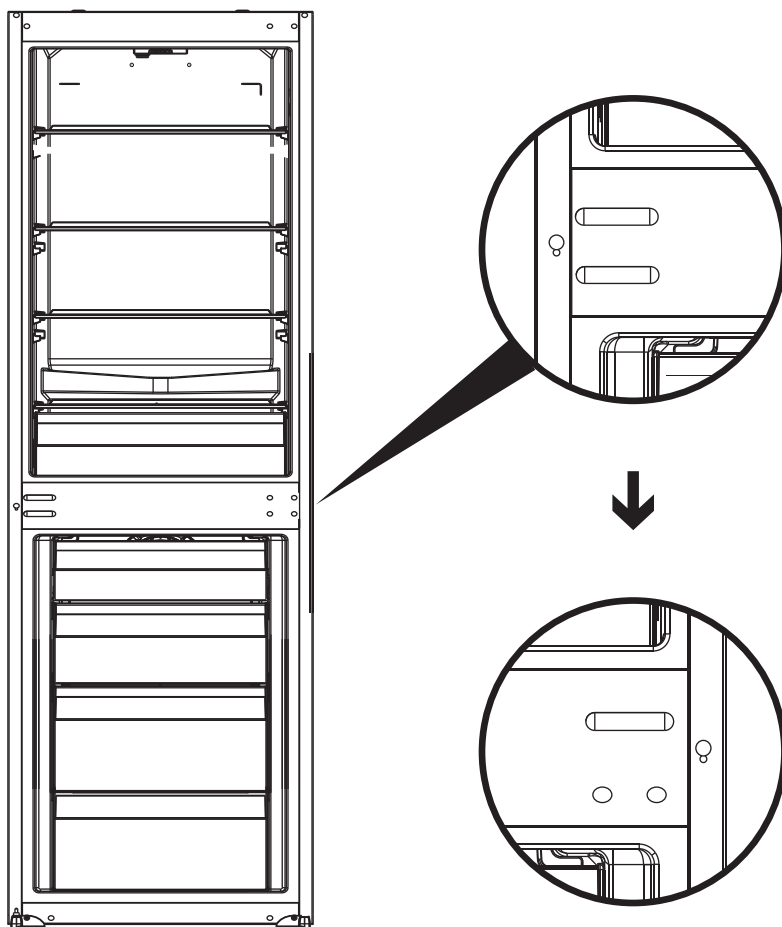


EN IMPORTANT: Complete this before installation into the cabinet. Carefully remove the two plastic hinge covers with a flat screwdriver. Unscrew the upper door hinge and carefully remove the top door.



- EN**
- Unscrew the middle hinge from the right side using a T20 driver.
 - Carefully remove the bottom door.
 - Move the bottom hinge pin from the right side to the left side.

03

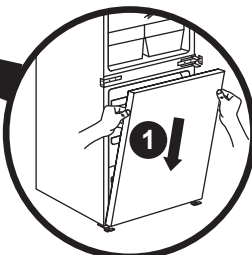
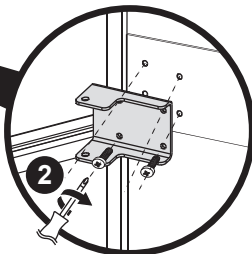
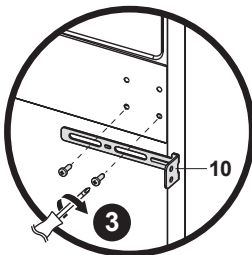
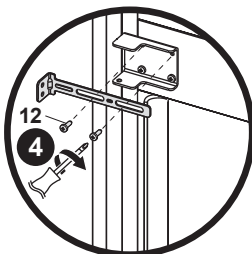
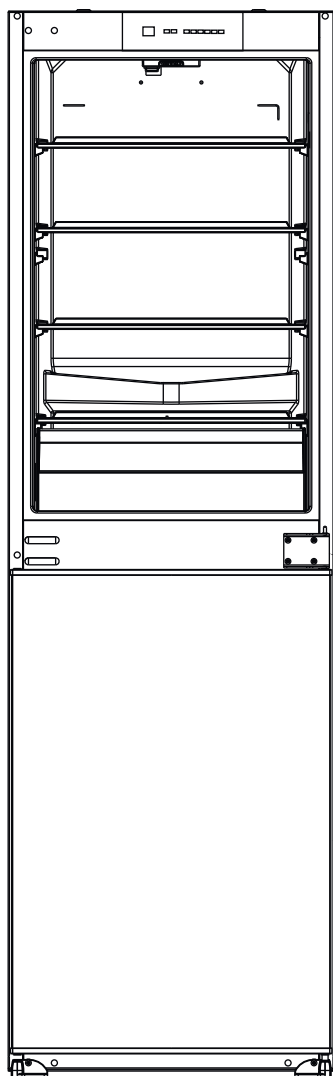


- EN**
- Carefully remove the two plastic hole covers on the left centre of the carcass.
 - Move one hole cover to the right side. The other holes are used for the side bracket in step 04.

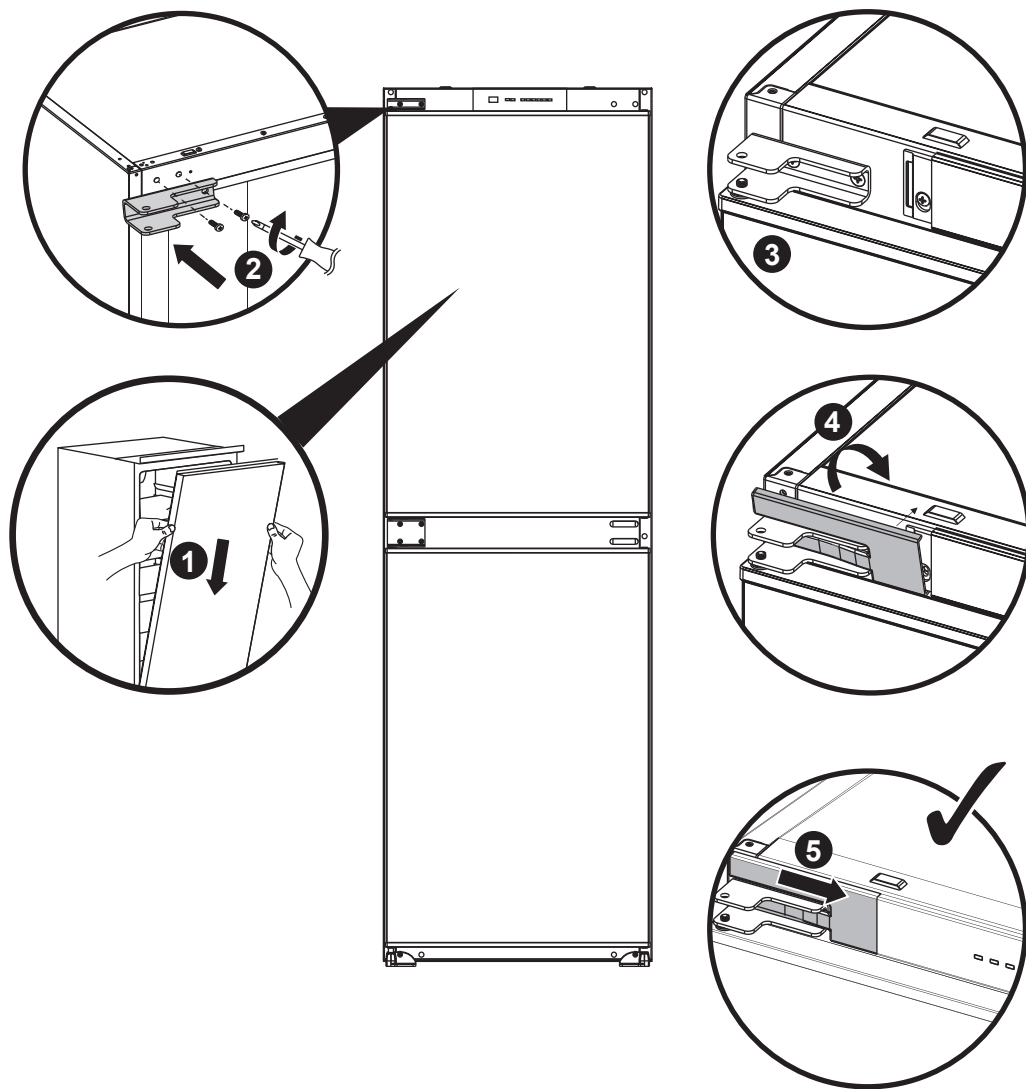
04

10. x2

12. x2



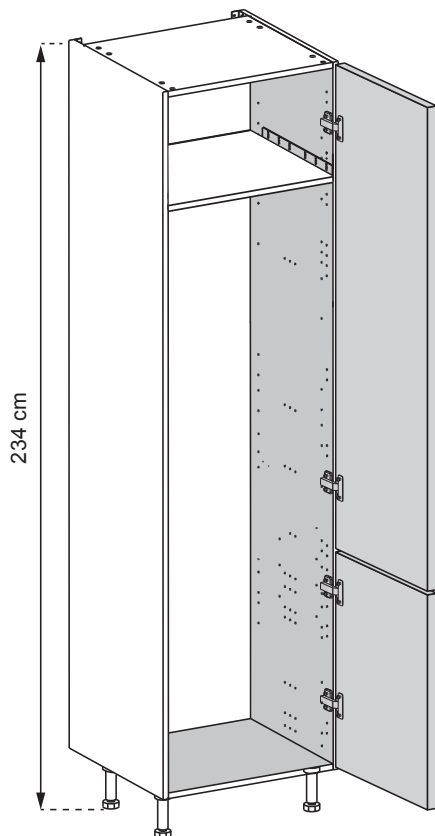
- EN**
- Relocate the bottom door onto the bottom hinge pin and reattach two of the bolts with the T20 driver.
 - Place the side bracket 10. x1 over the remaining hinge holes and replace the two remaining bolts.
 - Add the remaining side bracket 10. x1 to the right side with 12. x2.
 - Do not fully tighten the four side bracket bolts until the fridge is in its final position within the cabinet.



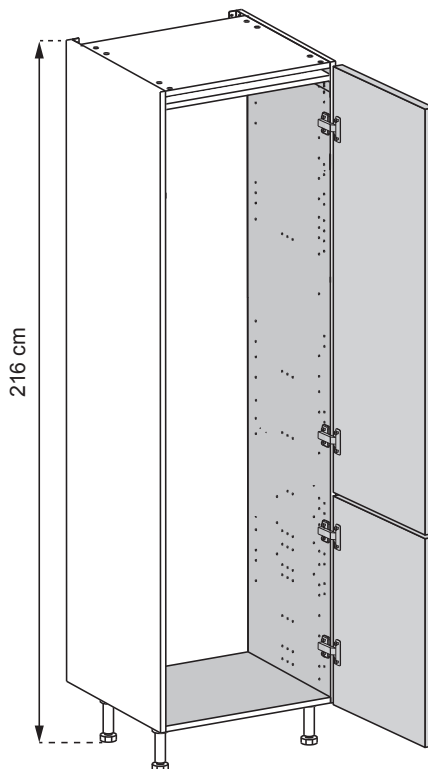
- EN**
- Relocate the top door onto the centre hinge and reattach the top hinge on the left.
 - Replace the plastic hinge covers and ensure both doors are correctly aligned with the cabinet and fully close without issue.

06

Cabinet Assembly



EN Tall (234 cm including legs)

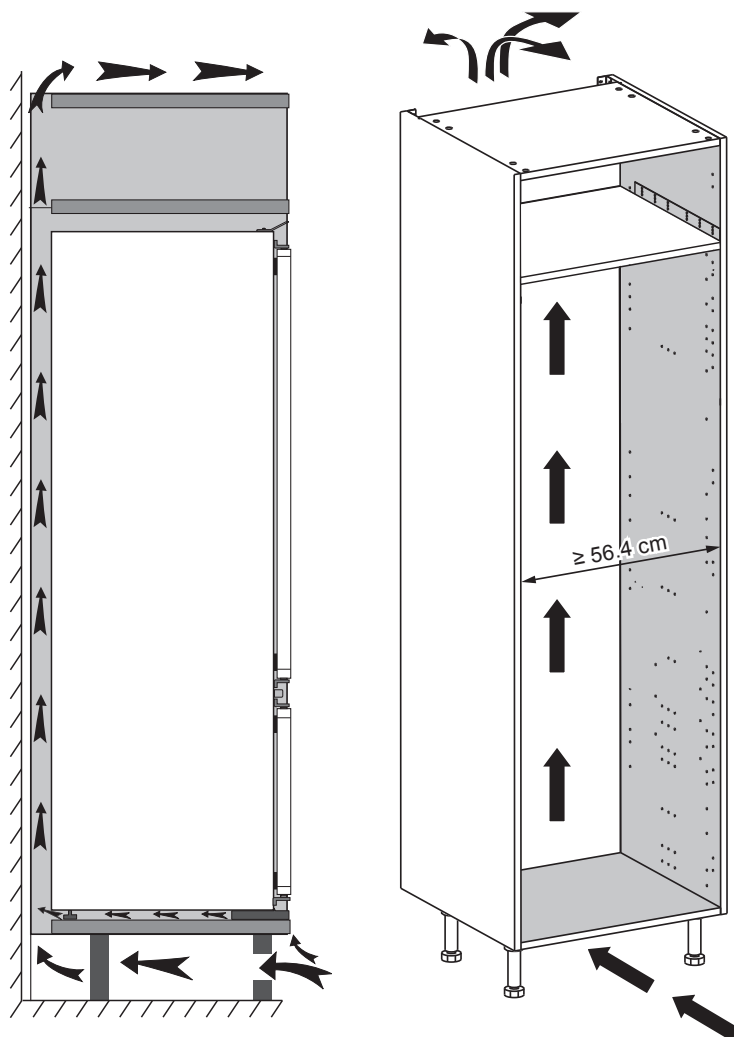


EN Standard (216 cm including legs)

EN Positioning the appliance

For correct installation, this appliance must be fitted in an appliance larder cabinet.

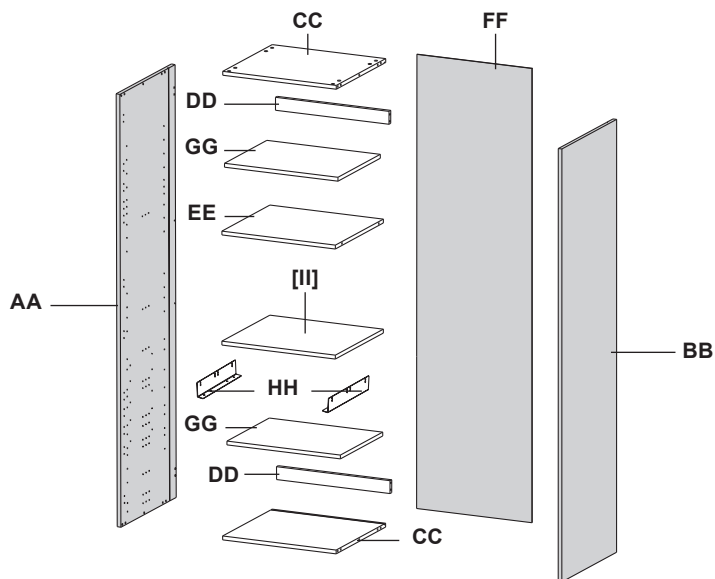
- Remove all packaging before use and dispose of responsibly.
- Do not use outside or in a wet location.
- Do not locate the appliance in direct sunshine or near to heat sources.
- Do not tilt the appliance by more than 45° during installation.
- This appliance is designed to be operated between ambient temperatures of 16°C to 43°C. (Climate Class: Normal N, Sub-Tropical ST, Tropical T).
- Do not install in a garage or outhouse where the ambient temperatures may exceed this range.
- Ensure there is sufficient ventilation at the rear of the appliance to ensure correct operation. Inadequate ventilation can affect adjacent cabinets due to a rise in temperature.



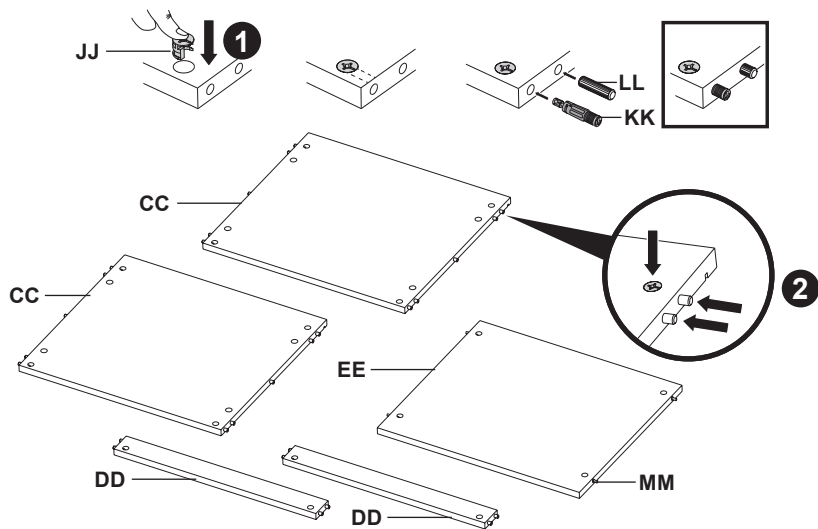
EN The diagram above shows the air circulation requirements including a slot that should be cut into the plinth if fitted. The back panel of the cabinet is not installed during assembly.

It is essential when installing your fridge there is adequate air circulation around the appliance to ensure the correct operation of the appliance. Inadequate air circulation will greatly impair the performance of the appliance and can affect adjacent cabinets due to the rise in temperature.

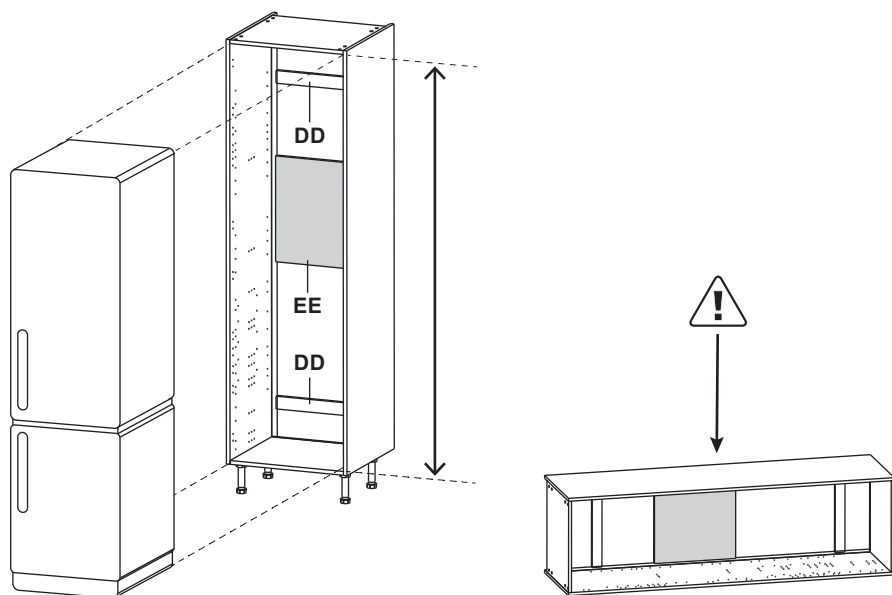
08



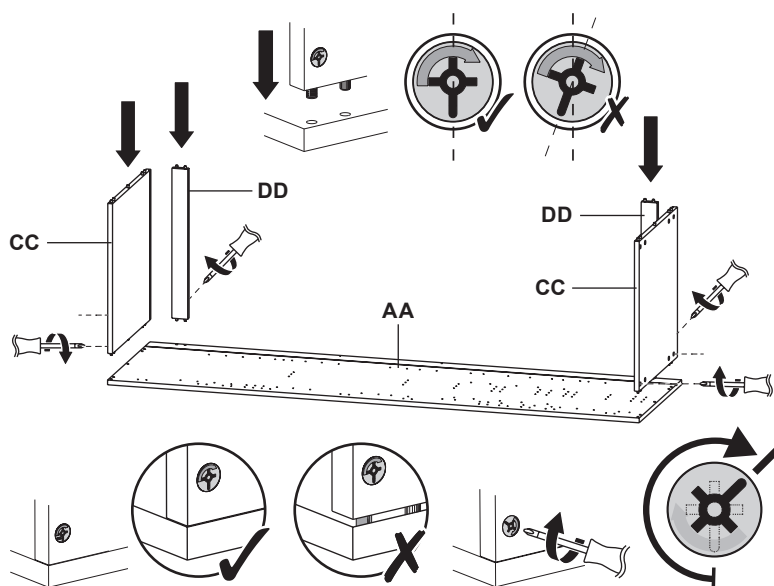
09



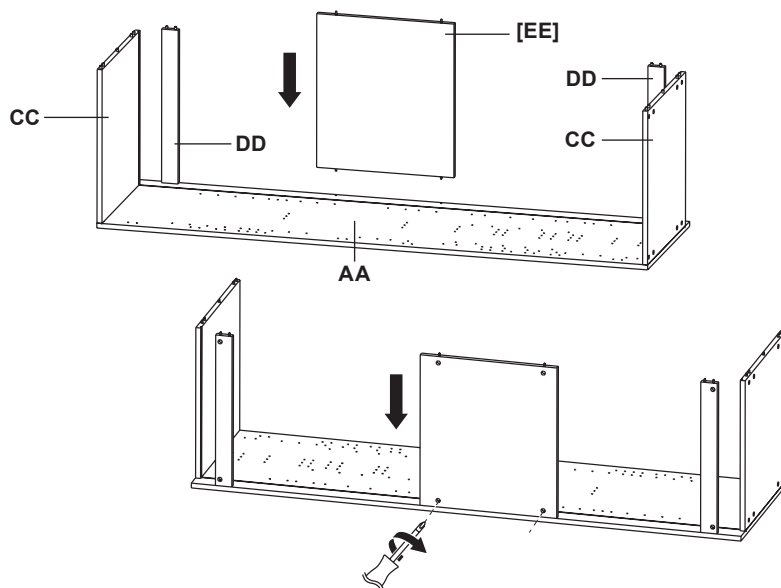
10



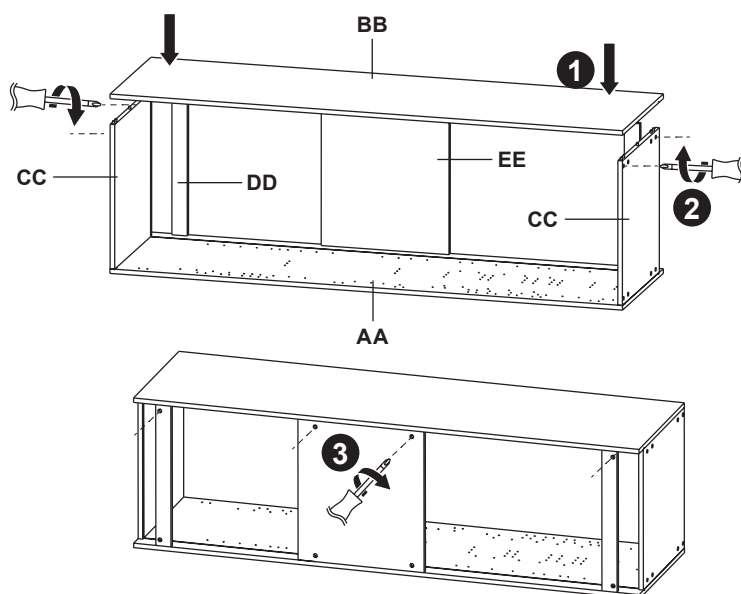
11



12

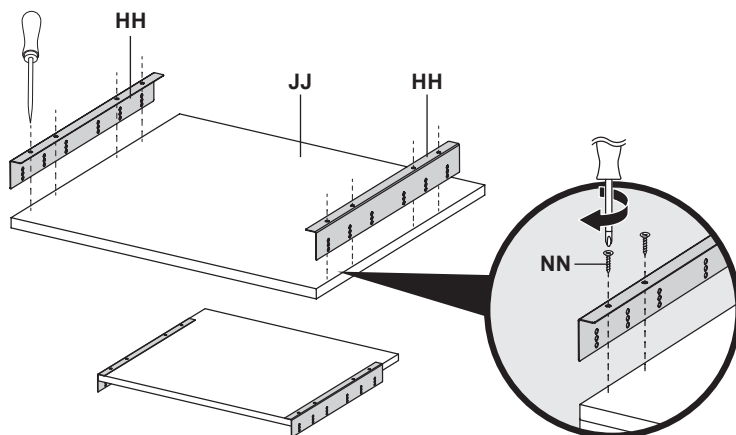


13

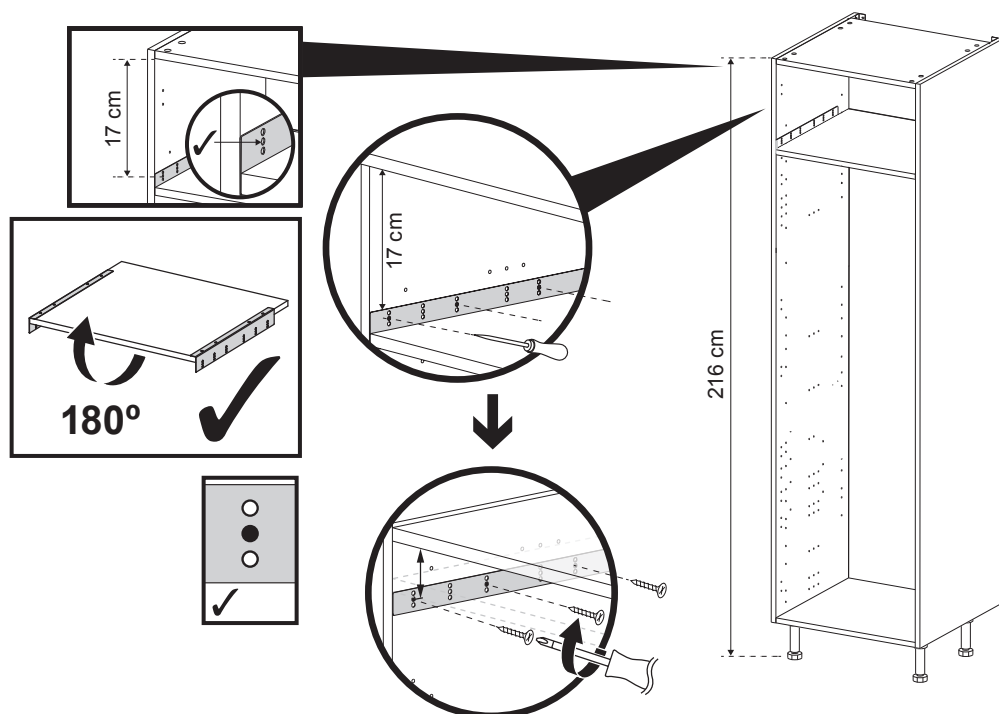


14


 NN. x8

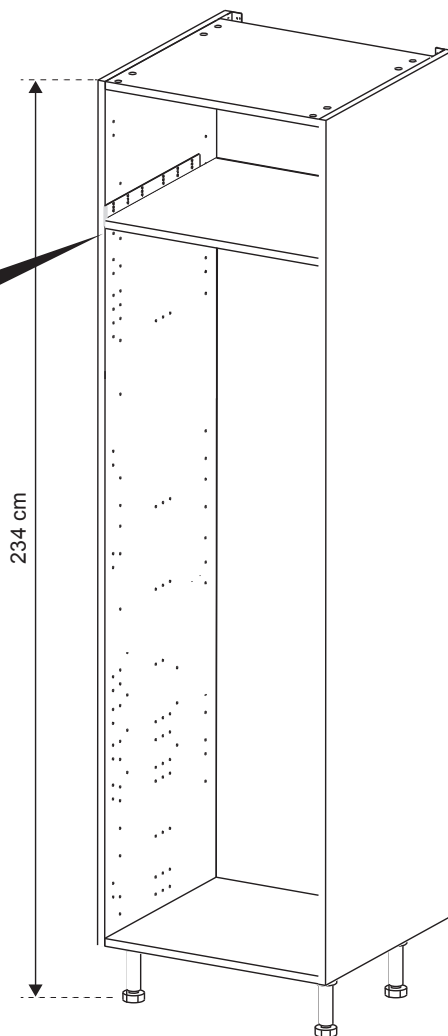
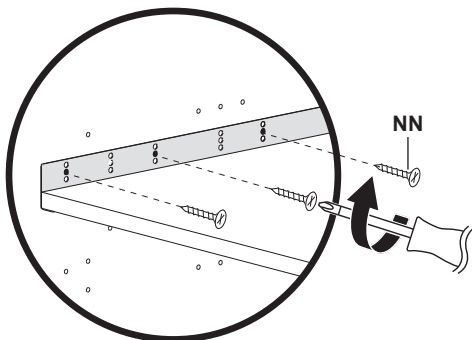
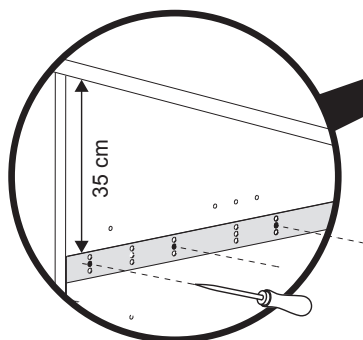
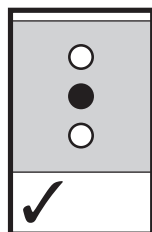
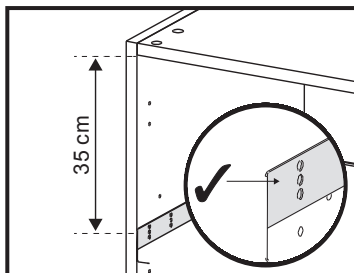
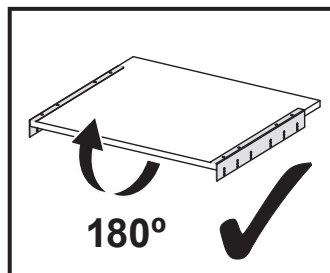


15A

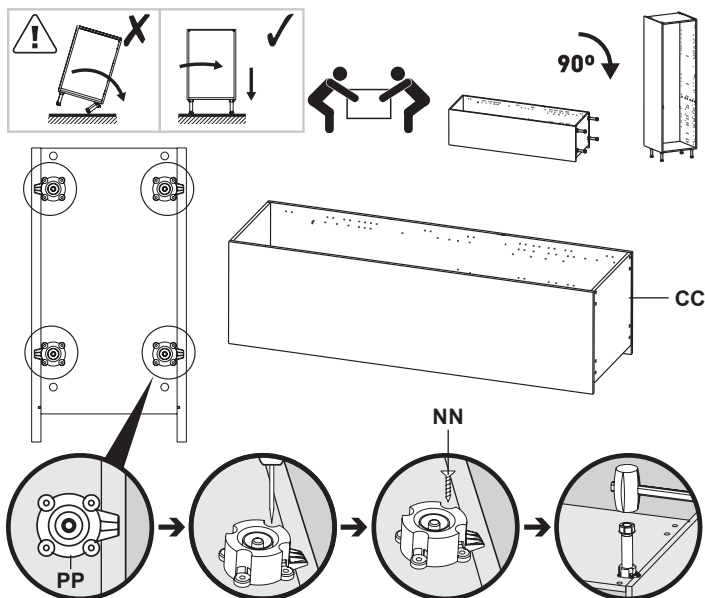


15B

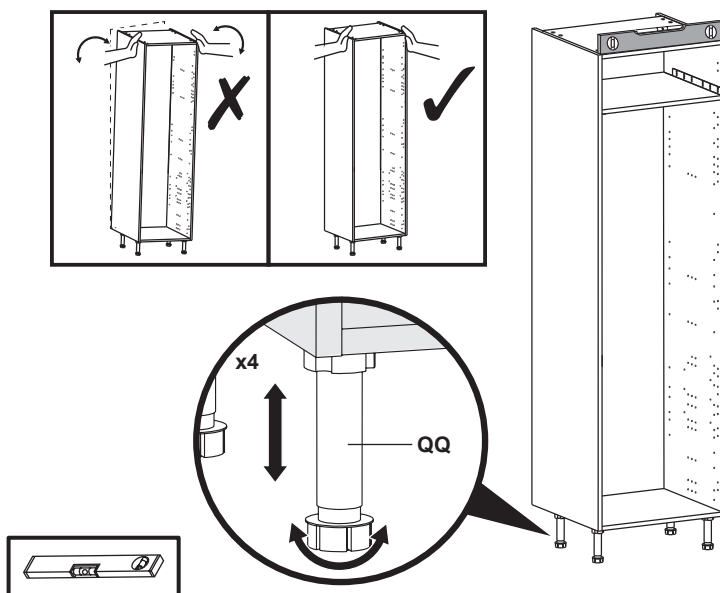
NN. x6



16

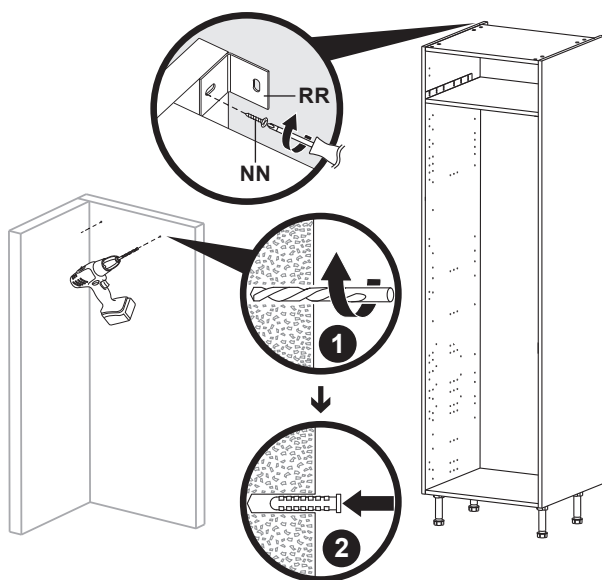


17

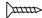



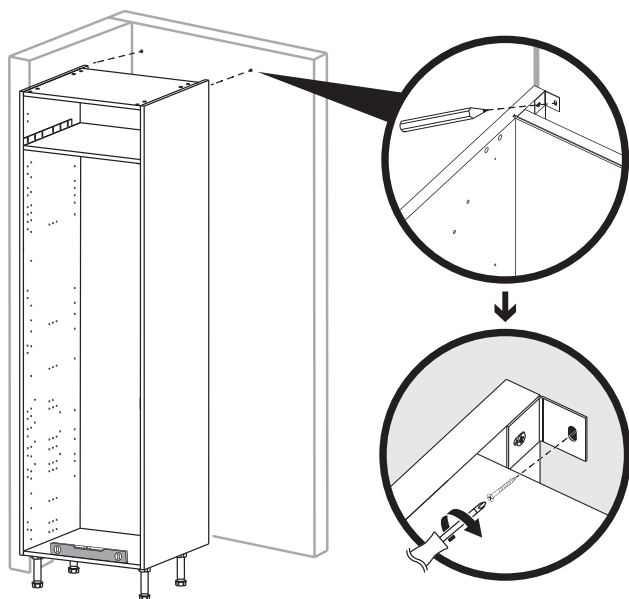
18

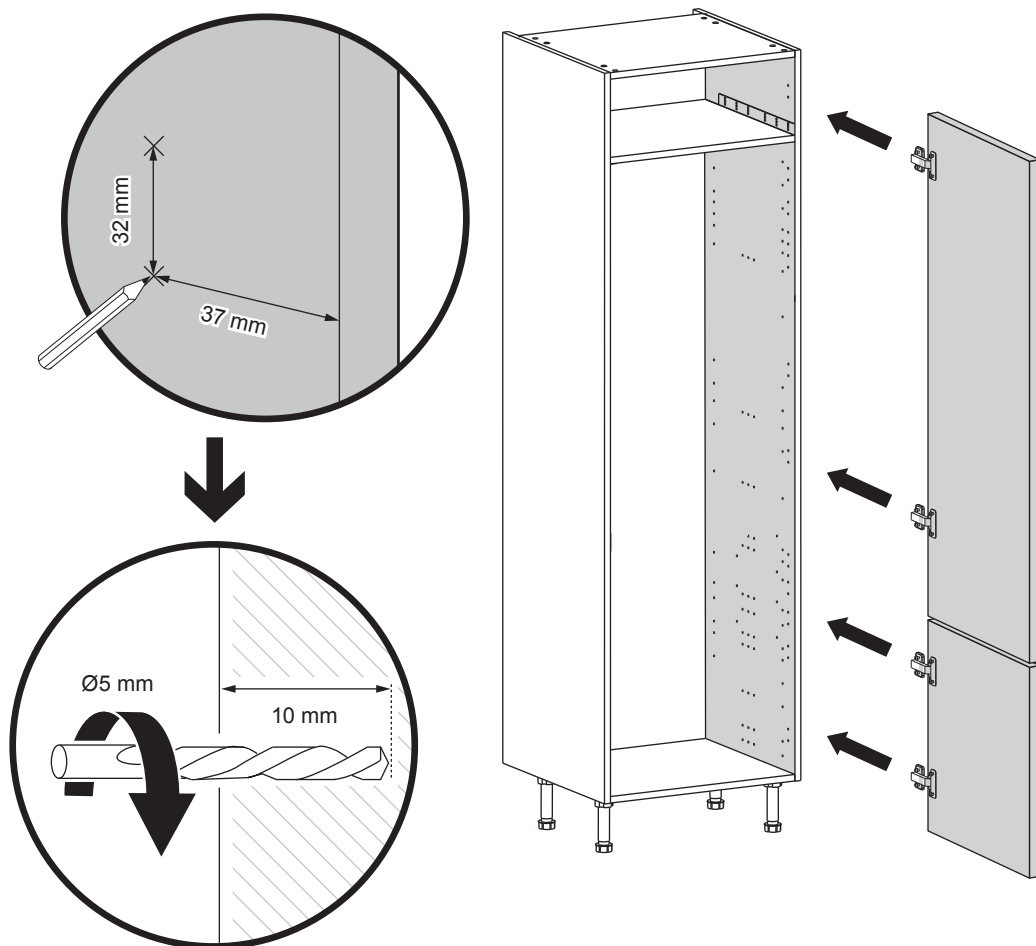
 NN. x2
  RR. x2



19

 NN. x2
  RR. x2





EN IMPORTANT

- You will need to add hinges and doors before inserting the appliance into the cabinet.
- Dependant upon your chosen door configuration, you may need to add extra screw holes to the vertical cabinet panels to fix all of the hinges.
- Any extra holes will need to be drilled using a 5 mm drill bit and will be centred at 37 mm from the front cabinet edge and 32 mm apart.



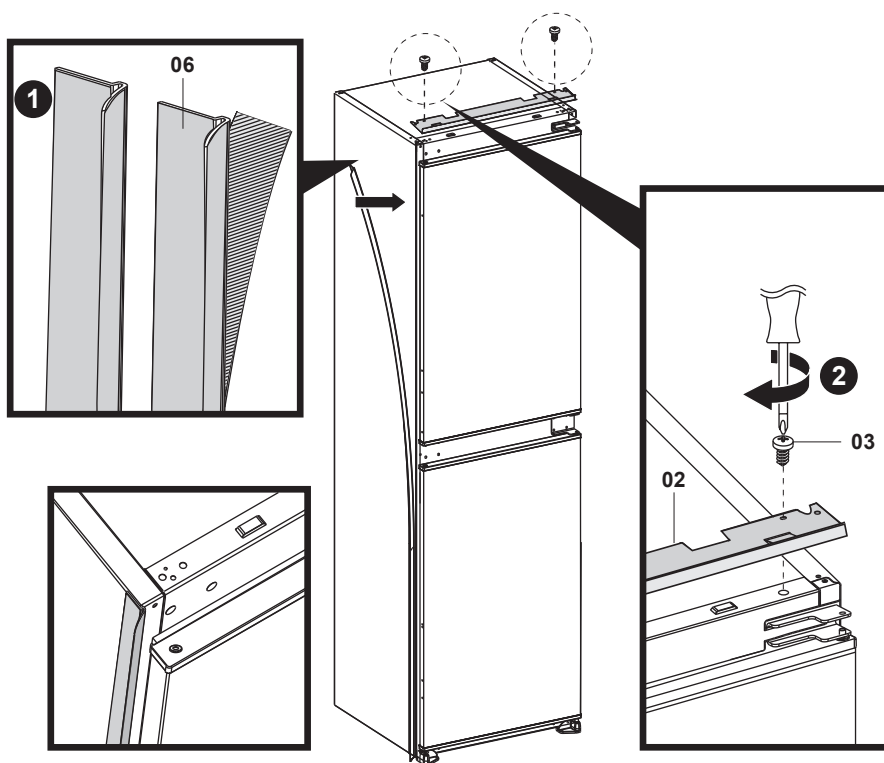
02. x1



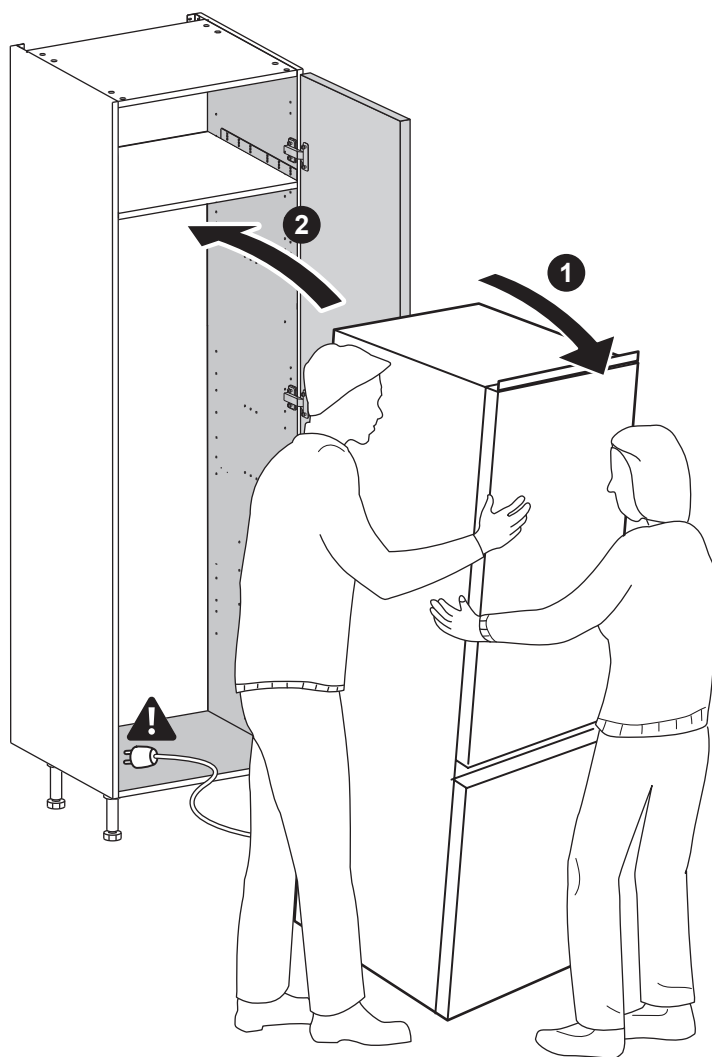
03. x2



06. x1

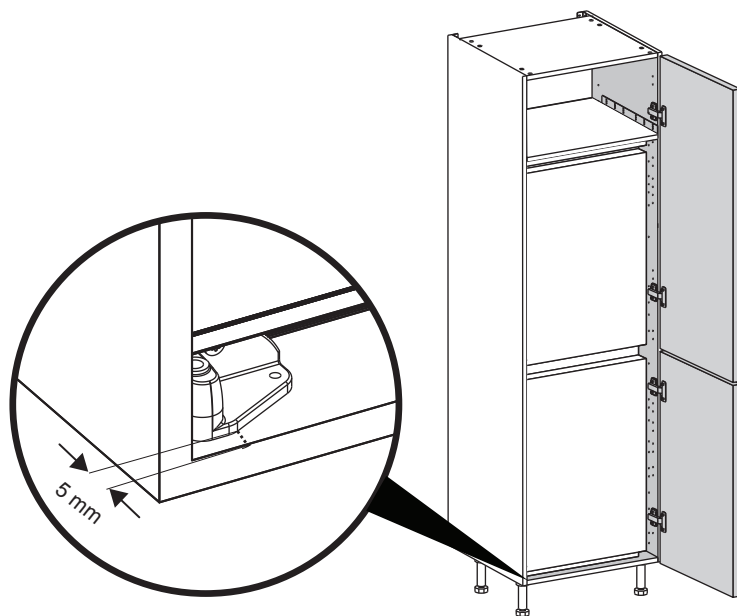


- EN**
- Add the sealing strip 06. x1 to the edge of the carcass opposite to the hinges before the appliance is installed into the cabinet.
 - Fix the roof bar 02. x1 with the two screws 03. x2.

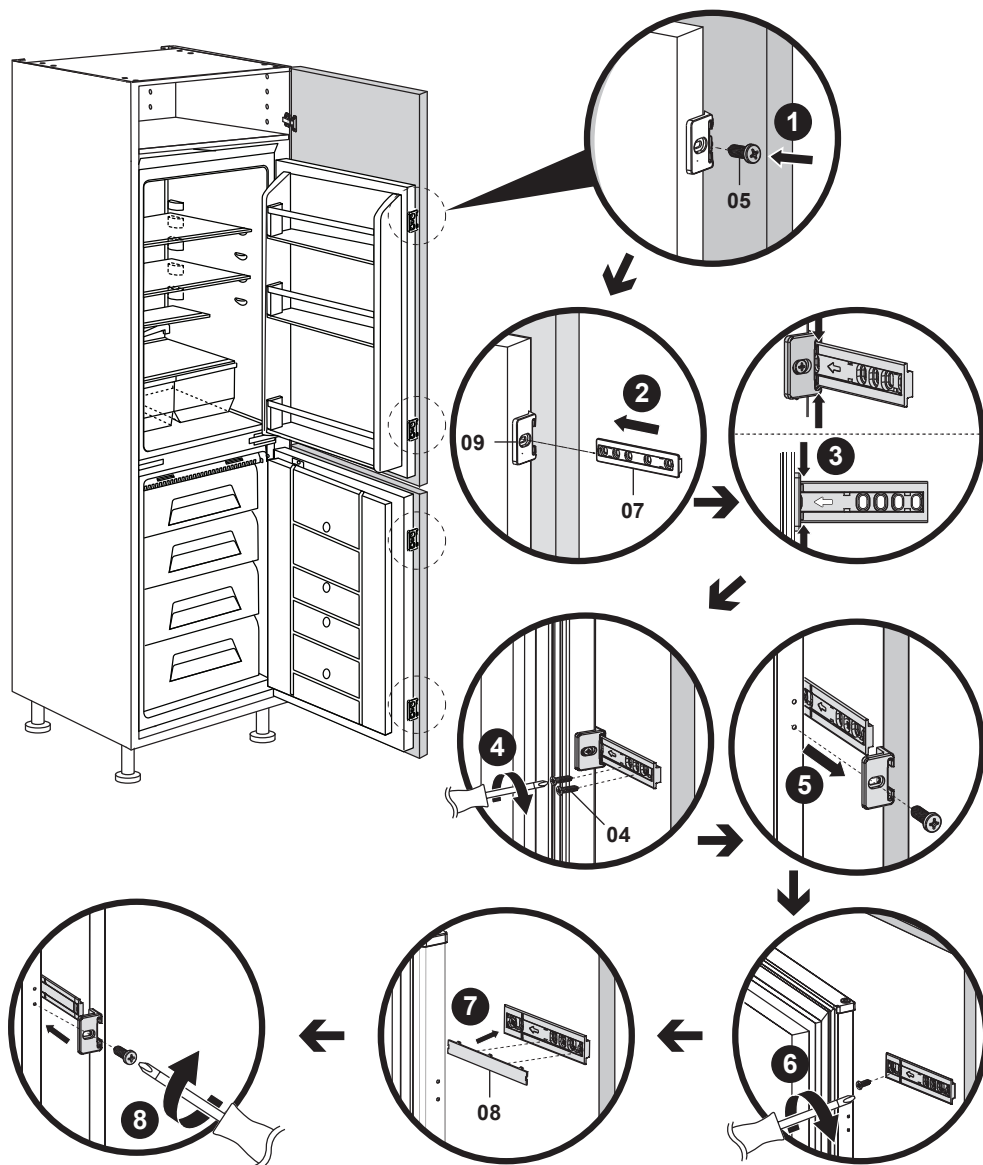


EN WARNING: Do not locate multiple portable socket-outlets or portable power supplies at the rear of the appliance.

CAUTION: Connect the mains plug to the mains socket only at the end of the installation. Make sure that there is access to the mains plug after the installation.



- EN**
- Move the appliance so that the front face of the roof bar is level with the cabinet front sides.
 - Ensure that the front face of the appliance is vertical and the feet should now be aligned as close to the bottom face as possible, to a maximum of 5 mm.
 - Ensure the appliance is sited so that the door sliders and hinges do not catch the carcass.

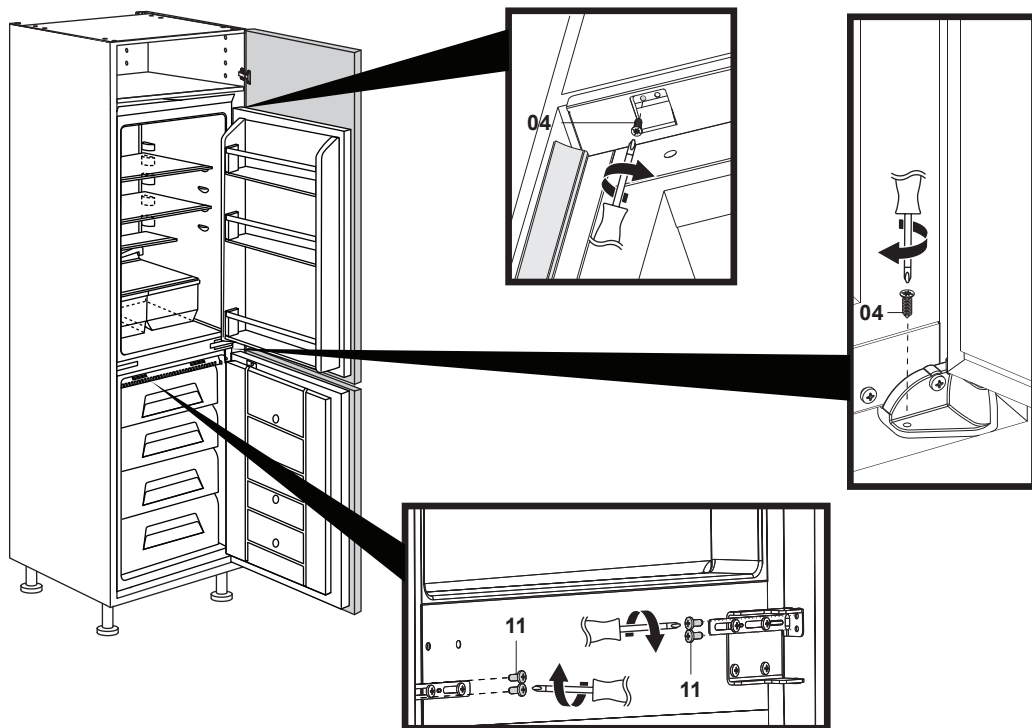


EN IMPORTANT: If your decorative doors are Shaker style with a thinner centre panel, do not use any screws in this section of the door. Use two screws 04 in the thicker section of the door only.

25

04. x12

11. x4



- EN**
- Secure the top panel of the appliance to the underside of the shelf using 04. x2.
 - Secure the two feet to the base of the cabinet using 04. x2.
 - Secure the two side brackets to the cabinet using 11. x4.

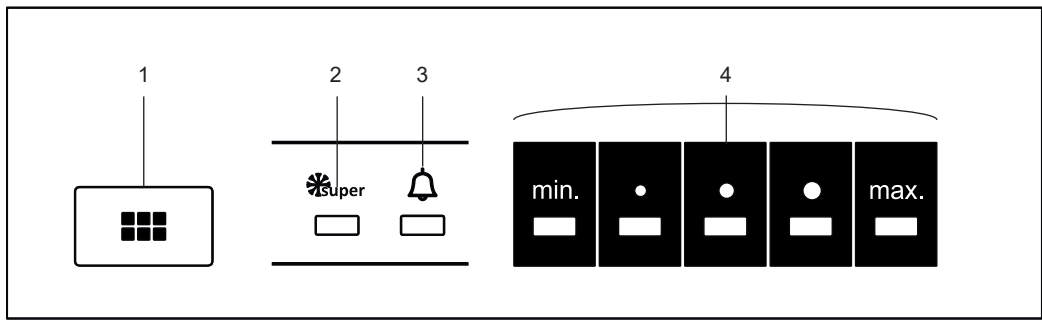
EN Functions & Settings

Before you start

IMPORTANT: TO ALLOW THE COOLANT TO SETTLE, LEAVE THE APPLIANCE IN ITS FINAL LOCATION FOR AT LEAST THREE HOURS BEFORE TURNING ON THE POWER.

The normal operating temperature for the freezer compartment is between -25 °C and -18 °C.
The normal operating temperature for the fridge compartment is between 0 °C and 4 °C.
Try to keep the door open for the shortest time possible to avoid increasing the compartment temperatures which results in the compressor using more energy.

Control panel



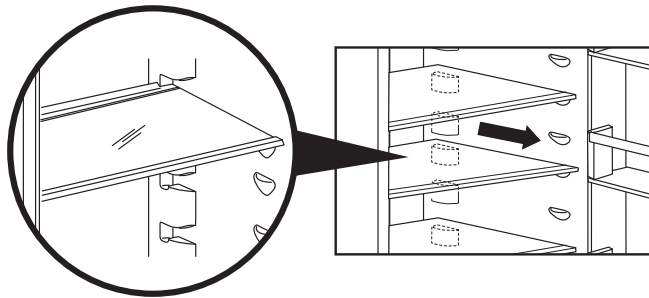
- 1. Thermostat button
 - Press this control to adjust the fridge temperature.
 - For rapidly chilling foods. This is recommended to use for a maximum of two hours only to avoid excessive energy usage and will automatically cancel after five hours use.
- 2. Super cool indicator
 - This LED will illuminate and sound a warning after two minutes.
- 3. Open door alarm
 - As the thermostat button is pressed, the display will cycle through the temperature options of super to min. (minimum), to max. (maximum), and then back to super.
- 4. Fridge temperature

Vegetable Basket - Humidity Control

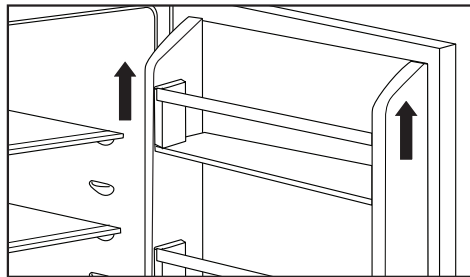


Use the Humidity Control to control the flow of cool air in and out of the vegetable basket. Move to the left to completely close the vents for normal use, and move to the right to open the vents as the basket becomes full to increase air flow.

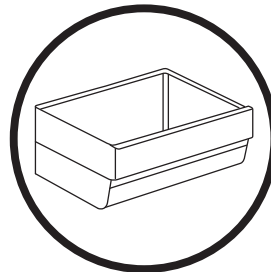
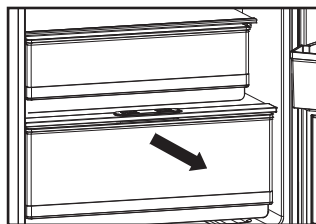
Shelf removal



Door balcony removal



Vegetable basket removal



Freezer Storage Advice

- Store fresh food in airtight boxes or wrap in bags or foil which are suitable for freezing.
- Do not allow frozen food to come into direct contact with unfrozen food.
- Pre-frozen food must be placed in the freezer as quickly as possible after purchasing.
- To prevent frost damage to fresh vegetables or fruits ensure they have been prepared correctly in advance. For example, blanch and shock vegetables and then dry thoroughly.
- You must always follow the storage guidelines printed on all food packaging. These are the maximum freezer storage times recommended at -18 °C:

- Ice Cream	1-2 months
- Fish & Pork	3-6 months
- Bread & Cheese	3-6 months
- Meat & Poultry	9-12 months
- Fruit & Vegetables	9-12 months





CAUTION: DISCONNECT THE APPLIANCE FROM THE POWER SUPPLY BEFORE CLEANING.

Internal Cleaning

- Do not pour water over the appliance.
- The cavity should be cleaned periodically using a solution of bicarbonate of soda and lukewarm water (5 ml to 0.5 litre of water).
- Clean the accessories separately with soap and water. Do not put them in the dishwasher.
- Do not use abrasive products, detergents or soaps.
- After washing, rinse with clean water and dry carefully.
- When you have finished cleaning reconnect the plug with dry hands.

External Cleaning

- Wash the outer cabinet with warm soapy water. Do NOT use abrasive products.
- There are sharp edges on the underside of the product so care should be taken when cleaning.
- Once or twice a year dust the rear of the appliance and the compressor at the back of the appliance, with a brush or vacuum cleaner, as an accumulation of dust will affect the performance of the appliance and cause increased energy consumption.

When the appliance is not in use

When the appliance is not in use for long periods, disconnect from the electricity supply, empty all of the food and clean the inside. Leave the door open to prevent the build-up of odours.

Defrosting

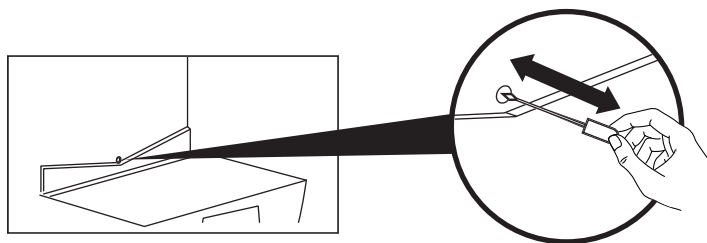
NOTE: Care must be taken when performing the following procedure.

The appliance is frost free, so there shouldn't be any requirement to defrost the freezer. However, in the unlikely event the appliance does need defrosting please follow the below steps:

- Two hours before defrosting is due to start, turn the thermostat up to maximum to ensure the food is as cold as possible. Remove and store in cool bags with ice blocks or another fridge as necessary.
- Protect the floor and fridge compartments with towels and containers to catch the ice as it melts.
- Switch off the appliance at the socket outlet and pull out the mains plug.
- Remove all drawers and shelves and leave the doors open.
- Never use hairdryers, electrical heaters, sharp knives or tools for defrosting.
- When the ice has melted, clean and dry the interior. Wipe up any spillages that may have occurred.
- Replace the mains plug, turn the appliance back on and return the food from storage.

Using the drainage tool

Occasionally use the drainage tool to ensure the hole at the rear of the fridge compartment remains unblocked. Excess moisture drains into the container above the compressor where it will evaporate.



Replacing a faulty bulb

The LED bulb inside the appliance cannot be replaced by the consumer. If the bulb fails please contact the Customer Service helpline for your country at the end of this manual to arrange an engineer visit.

Manufacturer:

UK Manufacturer:

Kingfisher International Products Limited,
1 Paddington Square, London, W2 1GG,
United Kingdom

EU Manufacturer:

Kingfisher International Products B.V.
Rapenburgerstraat 175E
1011 VM Amsterdam
The Netherlands

EN www.diy.com

www.screwfix.com

www.screwfix.ie

Customer Helpline (Freephone)

UK 0800 324 7818 uk@kingfisherservice.com

Eire 1800 932 230 eire@kingfisherservice.com

**To view instruction manuals online,
visit www.kingfisher.com/products**